

Histo Line ATS 2010 is a compact, bench top, linear slide stainer designed to process biological samples from dewaxing to histo-cytology staining. The unique linear design offers reliable technique in a small space in the laboratory. Histo Line ATS 2010 includes 18 trays, 16 reagents and 2 for in-out samples ranks, can process 47 slides continuously. All the reagent containers are completely closed to prevent evaporation, electrostatic filter prevent solvent odors and pollution. ATS 2010 can be programmed for immediate or delayed start, the immersion time can be set from 1 minute to 99 hours and 59 minutes.

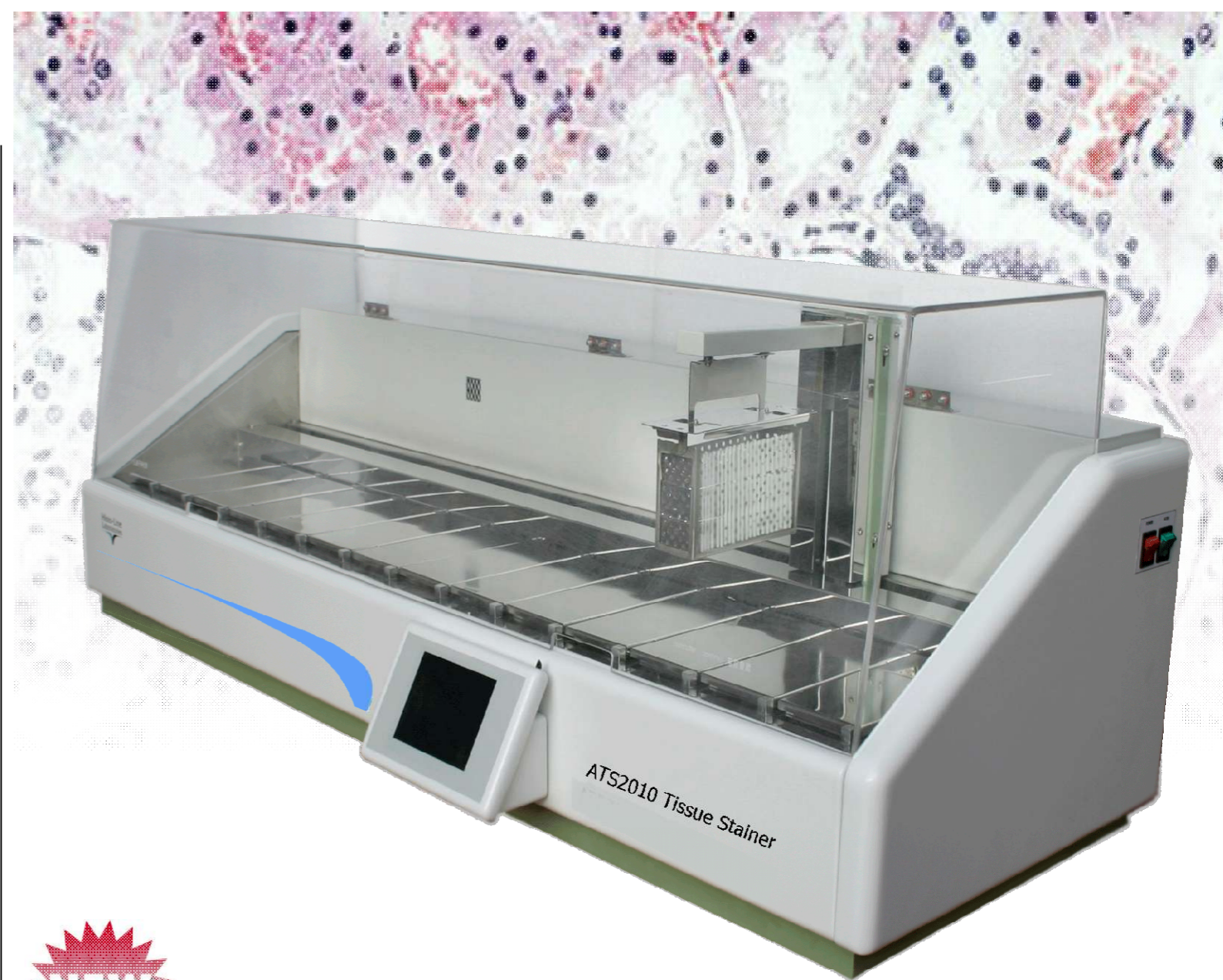
Technical Specifications

Number of Stations:	18
Number of Reagents station	14
Number of stored programs:	6
Number of samples in process	47 Slides per basket Continuous processing
Capacity of single tray	1000 ml
Setting range time for each step:	From 1 min. to 99 h 59 min.
Temperature range :	From ambient to 99°C increments 1°C
Up and down agitation :	4 times every 5 min.
Delay time setting:	99h 99 min.
UPS:	Outside
Nominal supply voltage:	220 V / 50 Hz 110 V / 60 Hz
Maximum power draw:	400 V/A
Dimension:	
Width:	1400 mm
Depth:	500 mm
Height:	550 mm
Weight:	142 Kg.

NB: Specifications are subject to change without any prior notice



Via Brembo, 27 - Milano Italy Tel: +39 0255230061 Fax: +39 0255213764 Email: histoline@histoline.com URL: www.histo-online.com



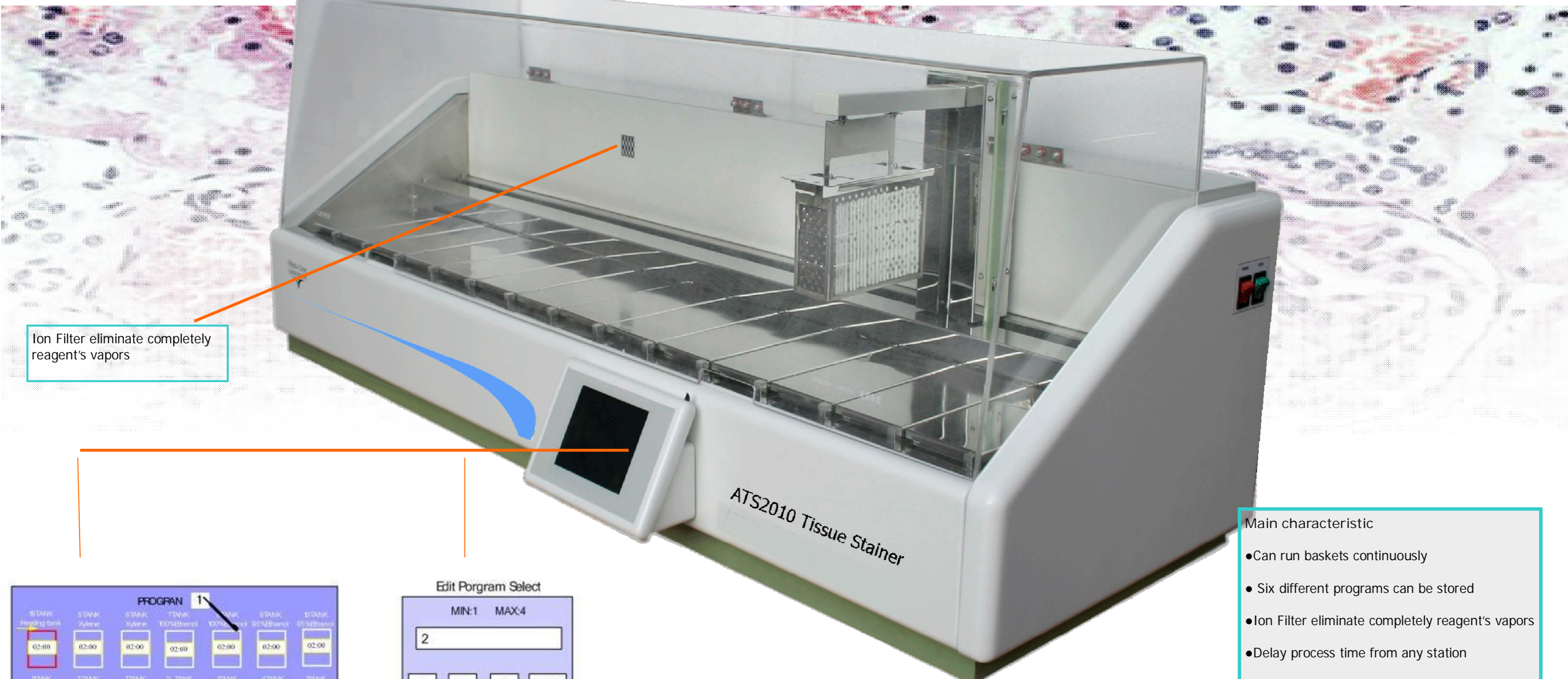
ATS2010

Automatic Tissue Stainer

Linear Closed Continuous Slides Stainer with 18 stations for staining of histology & cytology samples.



ATS 2010 Automatic Linear Slide Stainer



Ion Filter eliminate completely reagent's vapors

- Main characteristic
- Can run baskets continuously
 - Six different programs can be stored
 - Ion Filter eliminate completely reagent's vapors
 - Delay process time from any station
 - Digital electronic temperature control
 - Movement parts are in bearing linear guide for high precision on axis
 - Control and programming board made in touch screen technology
 - Ergonomic design

PROGRAM 1						
1STANK Heating tank	2STANK Xylene	3STANK Xylene	4STANK 100%Ethanol	5STANK 95%Ethanol	6STANK 90%Ethanol	7STANK 85%Ethanol
02:00	02:00	02:00	02:00	02:00	02:00	02:00
8STANK Clearing	9STANK Hematoxylin	10STANK Clearing	11STANK HCL-Ethanol	12STANK Clearing	13STANK Blue	14STANK Clearing
02:00	02:00	02:00	02:00	02:00	02:00	02:00
15STANK 95%Ethanol	16STANK 100%Ethanol	17STANK 100%Ethanol	18STANK Xylene	19STANK Xylene	20STANK Biding tank	
02:00	02:00	02:00	02:00	02:00	02:00	
SAVE		EXIT		15:08:04		

Edit Porgram Select

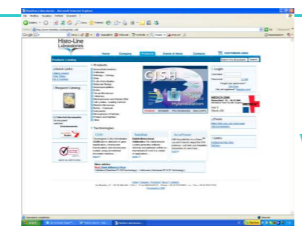
MIN:1 MAX:4

2

1	2	3	ESC
4	5	6	BS
7	8	9	
0	.	ENTER	

Xylene									
									DEL
									ENT
ESC									AL

All functions are settable trough the easy to operate Touch Screen Control Panel. All steps regarding processing cycle are visualized on display



Want More Information ? www.histo-online.com